



VOLLEYBALL

Fall/Winter 2021



UNDER ARMOUR

**THE ONLY
WAY IS
THROUGH.**





VISION

TO INSPIRE YOU WITH PERFORMANCE
SOLUTIONS YOU NEVER KNEW
YOU NEEDED BUT CAN'T IMAGINE
LIVING WITHOUT.

MISSION

UNDER ARMOUR
MAKES YOU BETTER.

VOLLEYBALL

WOMEN'S/YOUTH

- 002 VOLLEYBALL UNIFORMS
- 008 VOLLEYBALL APPAREL
- 011 VOLLEYBALL FOOTWEAR
- 012 VOLLEYBALL SOCKS
- 013 VOLLEYBALL PROTECTIVE
- 014 UNIFORM ORDERING INFO



WOMEN'S VOLLEYBALL ARMOURFUSE

- Brilliant, vibrant team colors permanently fused directly into textiles
- Limitless customization, all-inclusive pricing with exclusive UA designs and customized prints
- 37 different colors and 16 prints available
- 6 piece minimum order





SHOWTIME LONGSLEEVE JERSEYS

XS-2XL, OVERSIZE 3XL, YSM-YLG

CREWNECK	SIZE	PRICE
UJVJ3LW (W)	XS-2XL	\$98.00
UJVJ3LG (G)	YSM-YLG	\$93.00
V-NECK	SIZE	PRICE
UJVJ4LW (W)	XS-2XL	\$98.00
UJVJ4LG (G)	YSM-YLG	\$93.00

- Signature HeatGear® fabrication with 4-way stretch
- Mesh back panel for added breathability
- 2-ply lower sleeves for added protection and durability
- Adult tall (+2") option available - applies to body and sleeve length
- Bomber inspired V-Neck collar

OVERSIZED SURCHARGE +\$5 PER SIZE



SHOWTIME SHORTSLEEVE JERSEYS

XS-2XL, OVERSIZE 3XL, YSM-YLG

CREWNECK	SIZE	PRICE
UJVJ3SW (W)	XS-2XL	\$93.00
UJVJ3SG (G)	YSM-YLG	\$88.00
V-NECK	SIZE	PRICE
UJVJ4SW (W)	XS-2XL	\$93.00
UJVJ4SG (G)	YSM-YLG	\$88.00

- Signature HeatGear® fabrication with 4-way stretch
- Mesh back panel for added breathability
- 2-ply lower sleeves for added protection and durability
- Adult tall (+2") option available - applies to body and sleeve length
- Bomber inspired V-Neck collar

OVERSIZED SURCHARGE +\$5 PER SIZE



MOTO BLOCK

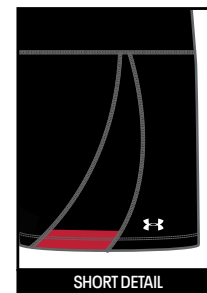
NEW DESIGN FIRST SHIP: 6/1/2021

REBEL

NEW DESIGN FIRST SHIP: 6/1/2021



SHORT DETAIL



SHORT DETAIL

AF LINE SHOT SHORT 2.0

XS-2XL, OVERSIZE 3XL (3" ONLY), YSM-YLG

4" SHORT	SIZE	PRICE
UJVSC5W (W)	XS-2XL	\$60.00
UJVSC5G (G)	YSM-YLG	\$50.00
NEW		
3" SHORT	SIZE	PRICE
UJVSB1W (W)	XS-2XL	\$60.00

- Lightweight, 4-way stretch fabrication improves range of motion & dries faster
- Sublimated insets - solid or printed option to match jersey
- Smooth flatlock seams prevent chafing
- 4" and 3" inseam

BLK | GPH | MDN | RED | RYL

OVERSIZED SURCHARGE +\$5 PER SIZE



SHOWTIME



KILL SPLIT



UA CLUSTER



KILL SPLIT SHORT DETAIL



UA CLUSTER SHORT DETAIL



NEW

GAMETIME LONGSLEEVE JERSEYS

FIRST SHIP: 6/1/2021 // XS-2XL

CREWNECK	SIZE	PRICE
UJVG2W (W)	XS-2XL	\$88.00

V-NECK	SIZE	PRICE
UJVG4W (W)	XS-2XL	\$88.00

New construction follows same great fit of UA Showtime collection.

- 5 oz. lightweight fabric in body, 7 oz. fabric in arms for extra durability
- Armourfuse® Printed Signature HeatGear fabrication with 4-way stretch



NEW

GAMETIME SHORTSLEEVE JERSEYS

FIRST SHIP: 6/1/2021 // XS-2XL

CREWNECK	SIZE	PRICE
UJVG1W (W)	XS-2XL	\$80.00

V-NECK	SIZE	PRICE
UJVG3W (W)	XS-2XL	\$80.00

New construction follows same great fit of UA Showtime collection.

- 5 oz. lightweight fabric in body, 7 oz. fabric in outer sleeve for extra durability
- Armourfuse® Printed Signature HeatGear fabrication with 4-way stretch

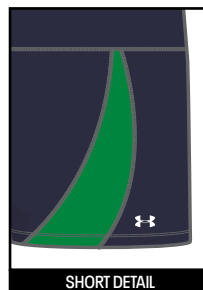


TONAL SHOT

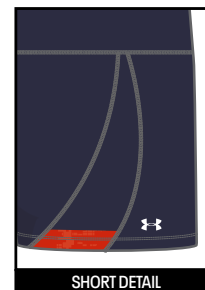
NEW DESIGN FIRST SHIP: 6/1/2021

BORDERLINE

NEW DESIGN FIRST SHIP: 6/1/2021



SHORT DETAIL



SHORT DETAIL

AF LINE SHOT SHORT 2.0

XS-2X, OVERSIZE 3XL (3" ONLY), YSM-YLG

4" SHORT	SIZE	PRICE
UJVSC5W (W)	XS-2XL	\$60.00
UJVSC5G (G)	YSM-YLG	\$50.00

NEW

3" SHORT	SIZE	PRICE
UJVSBIW (W)	XS-2XL	\$60.00

- Lightweight, 4-way stretch fabrication improves range of motion & dries faster
- Sublimated insets - solid or printed option to match jersey
- Smooth flatlock seams prevent chafing
- 4" and 3" inseam

BLK | GPH | MDN | RED | RYL

OVERSIZED SURCHARGE +\$5 PER SIZE



GAMETIME LONGSLEEVE JERSEYS

AVAILABLE FOR FILL-INS

XS-2XL, YSM-YLG

CREWNECK	SIZE	PRICE
UJV11LW (W)	XS-2XL	\$78.00
UJV11LG (G)	YSM-YLG	\$73.00
V-NECK	SIZE	PRICE
UJV12LW (W)	XS-2XL	\$78.00
UJV12LG (G)	YSM-YLG	\$73.00

- 5 oz. lightweight fabric in body, 7 oz. fabric in arms for extra durability
- Armourfuse® Printed Signature HeatGear fabrication with 4-way stretch

GAMETIME SHORTSLEEVE JERSEYS

AVAILABLE FOR FILL-INS

XS-2XL, OVERSIZE 3XL, YSM-YLG

CREWNECK	SIZE	PRICE
UJV11SW (W)	XS-2XL	\$68.00
UJV11SG (G)	YSM-YLG	\$63.00
V-NECK	SIZE	PRICE
UJV12SW (W)	XS-2XL	\$68.00
UJV12SG (G)	YSM-YLG	\$63.00

- 5 oz. lightweight fabric in body, 7 oz. fabric in arms for extra durability
- Armourfuse® Printed Signature HeatGear fabrication with 4-way stretch

OVERSIZED SURCHARGE +\$5 PER SIZE

AF LINE SHOT SHORT 2.0

XS-2X, OVERSIZE 3XL (3" ONLY), YSM-YLG

4" SHORT	SIZE	PRICE
UJVSC5W (W)	XS-2XL	\$60.00
UJVSC5G (G)	YSM-YLG	\$50.00
NEW		
3" SHORT	SIZE	PRICE
UJVSB1W (W)	XS-2XL	\$60.00

- Lightweight, 4-way stretch fabrication improves range of motion & dries faster
- Sublimated insets - solid or printed option to match jersey
- Smooth flatlock seams prevent chafing
- 4" and 3" inseam

BLK | GPH | MDN | RED | RYL

OVERSIZED SURCHARGE +\$5 PER SIZE



RIPPLE SHORT DETAIL



LINE DROP SHORT DETAIL

GAMETIME



LINE DROP

RIPPLE



NEW

1361267

INFINITE POWER LS JERSEY

\$50.00 | **FITTED** | **XXS-2XL**

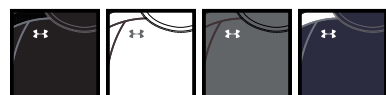
FIRST SHIP: 6/1/2021

- Classic crew neck
- Exaggerated shoulder mesh panels for breathability
- 2-ply lower sleeve for extra durability
- White mesh color blocking on shoulder
- Curved hem for enhanced coverage
- 4-way stretch construction moves better in every direction
- Anti-odor technology prevents the growth of odor-causing microbes
- Double ply lower arms for added durability

84% POLYESTER, 16% ELASTANE

SOLID COLORWAYS: 001, 100 & 040

heatgear



001 BLK/WHT (SOLID) 100 WHT/GPH (SOLID) 040 GPH/WHT (SOLID) 410 MDN/WHT



600 RED/WHT 400 RYL/WHT 301 FGR/WHT

1326614 UA VB POWERHOUSE LS JERSEY

\$45.00 | FITTED | XS-2XL

GIRLS: 1326617 | \$40.00 | YSM-YLG

1326615 UA VB POWERHOUSE SS JERSEY

\$40.00 | FITTED | XS-2XL

GIRLS: 1326620 | \$35.00 | YSM-YLG

FIRST SHIP: C/O // LAST SHIP: 3/15/2022

- Smooth, lightweight, fast-drying fabric for superior performance
- Upper sleeve & side mesh panels for added breathability
- 7 oz. lower sleeve for extra durability
- 4-way stretch construction & exaggerated armholes for better range of motion
- Bomber inspired V-Neck color
- White mesh color blocking on V-neck collar & sleeve insets

79% POLYESTER, 21% ELASTANE

SOLID COLORWAYS: 001, 100 & 040

THE BASE UNIFORM DESIGN IS APPROVED FOR HS PLAY

heatgear

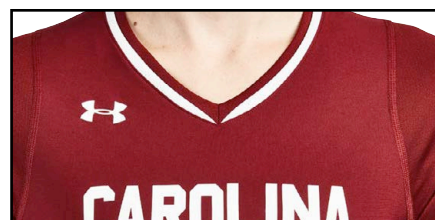
G = GIRLS OFFERING



001 G BLK/WHT (SOLID)
100 G WHT/BLK (SOLID)
040 G GPH/WHT (SOLID)
410 G MDN/WHT
600 RED/WHT
400 RYL/WHT



301 FGR/WHT
609 MAR/WHT
500 PUR/WHT
625 CRD/WHT
475 CBL/WHT
640 PNP/WHT



V-NECK DETAIL

1351243**UA TEAM SHORTY 4"****\$30.00 | COMPRESSION | XS-2XL****YOUTH: 1363501 | \$25.00 | YSM-YXL****FIRST SHIP: C/O, YOUTH FIRST SHIP: 6/1/2021**

- Super-light HeatGear® fabric delivers superior coverage without weighing you down
- Material wicks sweat & dries really fast
- 4-way stretch construction moves better in every direction
- Anti-odor technology prevents the growth of odor-causing microbes
- Stretchy elastic waistband with interior wordmark wrap
- Inseam: 4"
- Heatseal Logo

87% POLYESTER, 13% ELASTANE

heatgear

TARGET COLORWAY

Y = YOUTH OFFERING

001 Y
BLK/WHT410 Y
MDN/WHT600
RED/WHT400
RYL/WHT**1351244****UA TEAM SHORTY 3"****\$30.00 | COMPRESSION | XS-2XL****FIRST SHIP: C/O**

- Super-light HeatGear® fabric delivers superior coverage without weighing you down
- Material wicks sweat & dries really fast
- 4-way stretch construction moves better in every direction
- Anti-odor technology prevents the growth of odor-causing microbes
- Stretchy elastic waistband with interior wordmark wrap
- Inseam: 3"

87% POLYESTER, 13% ELASTANE

heatgear

TARGET COLORWAY

001
BLK/WHT410
MDN/WHT600
RED/WHT400
RYL/WHT019
CHC/WHT

NEW

**3023708
UA HOVR HIGHLIGHT ACE**

\$125.00 | SIZES: 5-13, 14

FIRST SHIP: 7/1/2021

- Lightweight, breathable upper with added structure & support around the ankle for complete comfort
- Extended ankle collar is super-stretchy for easier on/off with excellent retention for support & control
- Abrasion-resistant, 3D rubberized toe cap delivers maximum protection & durability
- Webbed, lockdown lacing system for increased stability & a customized fit
- UA HOVR™ technology provides 'zero gravity feel' to maintain energy return that helps eliminate impact
- Compression mesh Energy Web contains & molds UA HOVR™ foam to give back the energy you put in
- Molded sockliner forms to your foot, eliminating slippage & providing ideal underfoot comfort
- Full rubber herringbone traction pattern provides maximum floor control & grip
- Printed sockliner



NEW

**3023709
UA HOVR BLOCK CITY**

\$115.00 | SIZES: 5-13, 14

FIRST SHIP: 7/1/2021

- Synthetic midfoot panels for durable support & stability with lightweight mesh for added breathability
- Increased foam in ankle collar for enhanced comfort & easy of entry
- Webbed, lockdown lacing system for increased stability & a customized fit
- Abrasion-resistant, 3D rubberized toe cap for protection & durability & TPU heel counter for a more locked-in fit
- UA HOVR™ technology provides 'zero gravity feel' to maintain energy return that helps eliminate impact
- Compression mesh Energy Web contains & molds UA HOVR™ foam to give back the energy you put in
- Molded sockliner forms to your foot, eliminating slippage & providing ideal underfoot comfort
- Full rubber herringbone traction pattern provides maximum floor control & grip
- Printed sockliner



SOCKS FW21 ▶

1270242 UA TEAM CREW

\$9.99 | SINGLE PAIR | MD, LG, XL

YOUTH: 1270243 | \$8.99 | YLG

FIRST SHIP: C/O // LAST SHIP: 12/15/2021

- Strategic Cushion protects high-impact areas of feet
- Embedded Arch Support helps reduce foot fatigue
- ArmourDry™ Material wicks moisture, accelerates evaporation
- ArmourBlock® Technology helps prevent growth of odor-causing bacteria

84% POLYESTER, 14% NYLON, 2% SPANDEX

Y = YOUTH OFFERING

609/MAR NOT SHOWN

XL NOT OFFERED IN 301, 500, 609, 625 & 654



001 Y BLK/WHT 040 GPH/BLK 100 Y WHT/BLK 301 GRN/WHT 400 Y RYL/WHT



410 Y MDN/WHT 500 PUR/WHT 600 Y RED/WHT 625 CRD/WHT 654 TPK/BLK

1352669 UA TRAINING COTTON CREW 3-PACK

\$14.00 | THREE PAIR | MD, LG, XL

1346789 UA TRAINING COTTON CREW 6-PACK

\$20.00 | SIX PAIR | MD, LG, XL

FIRST SHIP: C/O

- Strategic Cushion reduces bulk and delivers flexibility
- Dynamic Arch Support helps reduce foot fatigue
- ArmourDry™ Material wicks moisture, accelerates evaporation
- ArmourBlock® Technology helps prevent growth of odor-causing bacteria

76% POLYESTER, 22% COTTON, 2% SPANDEX



001
BLK/STL

001
BLK



100
WHT/STL

100
WHT

1315434
UA SWITCH 2.0 VOLLEYBALL
KNEE PAD

\$34.99 | SOLD IN PAIRS | SM, MD, LG

FIRST SHIP: C/O

- Reversible construction for home and away
- Dual density padding for maximum padding without the bulk
- HeatGear® lining for enhanced breathability



001
BLK/WHT

1290868
UA STRIVE 2.0 VOLLEYBALL
KNEE PAD

\$29.99 | SOLD IN PAIRS | SM, MD, LG

FIRST SHIP: C/O

- Hinged design allows for maximum mobility
- Dual density padding for maximum padding without the bulk
- HeatGear® lining for enhanced breathability



001
BLK/WHT

100
WHT/BLK

600
RED/WHT

400
RYL/WHT

410
MDN/WHT

1290867
ARMOUR® 2.0 VOLLEYBALL
KNEE PAD

\$24.99 | SOLD IN PAIRS | SM, MD, LG

GIRLS: 1294850 | \$22.99 | OSFA

FIRST SHIP: C/O

- Circular ArmourKnit for unmatched comfort, fit and feel
- Dual density padding for maximum padding without the bulk

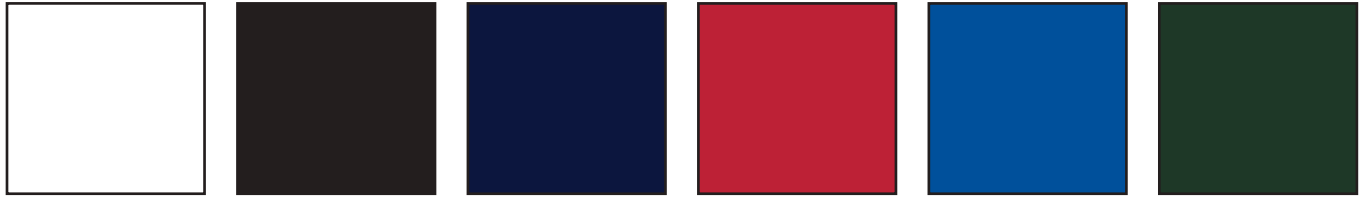
GIRLS OFFERED IN ALL COLORS



001
BLK/WHT

100
WHT/BLK

ARMOUR FUSE



WHITE

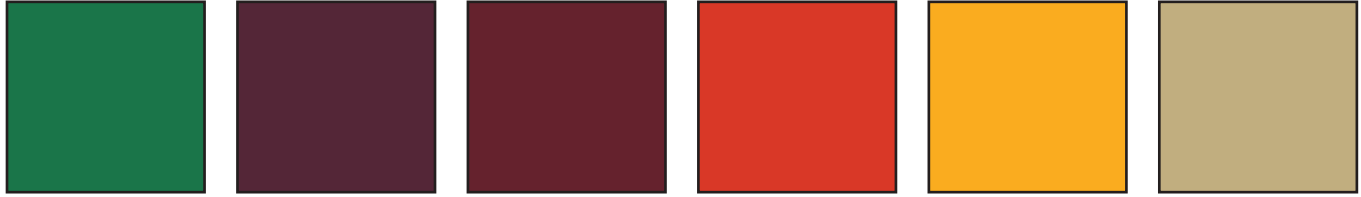
BLACK

MIDNIGHT NAVY

UNIVERSITY RED

ROYAL

FOREST GREEN



TEAM KELLY GREEN

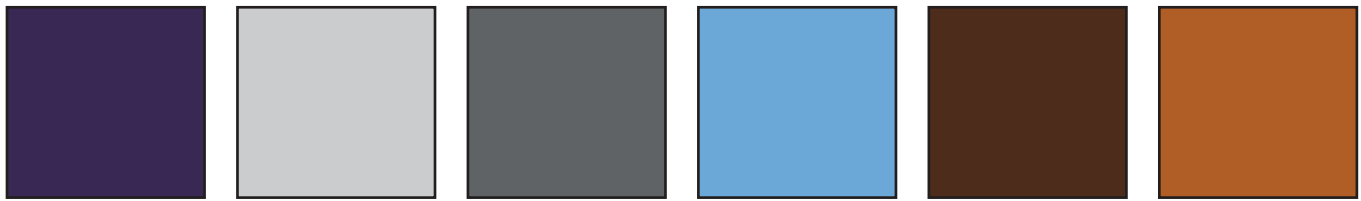
MAROON

CARDINAL

DARK ORANGE

STEELTOWN GOLD

TEAM VEGAS GOLD



PURPLE

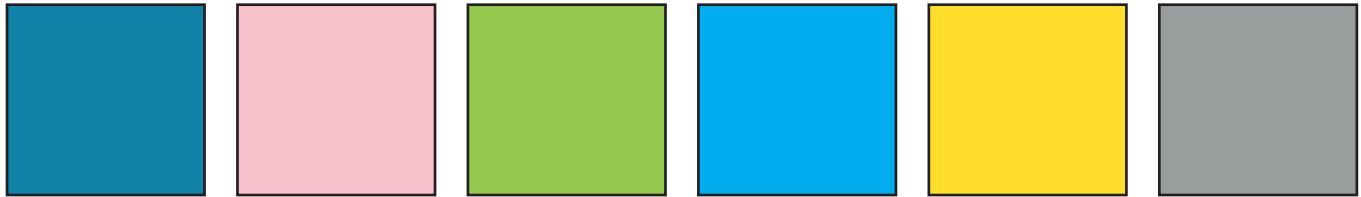
SILVER GRAY

GRAPHITE

CAROLINA BLUE

CLEVELAND BROWN

TEXAS ORANGE



COASTAL TEAL

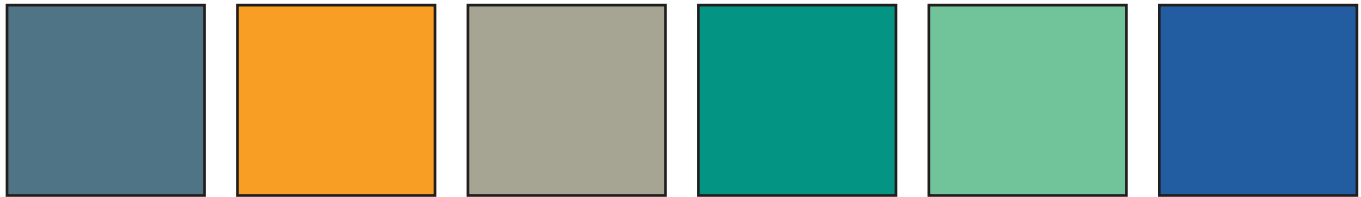
PINK

POISON

CAPRI

TAXI

BASEBALL GRAY



OCEAN STORM

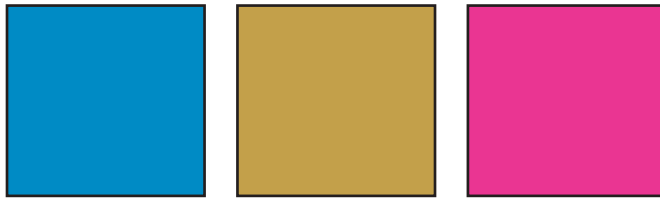
TENNESSEE ORANGE

GRAYSTONE

MIAMI TEAL

SEA GLASS

POWDERKEG BLUE

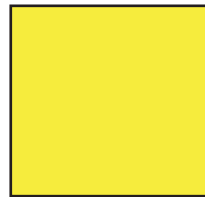


ELECTRIC BLUE

GOLD RUSH

TROPIC PINK

**FLUORESCENTS
NOT CURRENTLY AVAILABLE IN TONAL
PRINTS OR ON GAMEDAY SELECT PRODUCT**



YELLOW FLUORESCENT



PINK FLUORESCENT



GREEN FLUORESCENT



ORANGE FLUORESCENT

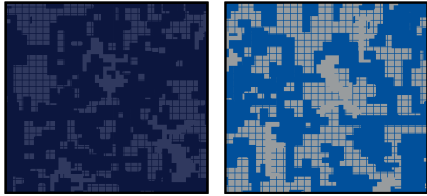
HEATHER COLOR OFFERING

Swatches available through your ArmourFuse business Customer Service Rep

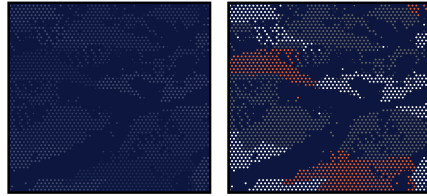


ARMOUR FUSE

Prints available in all ArmourFuse colors. (Fluorescents not currently available in tonal prints)



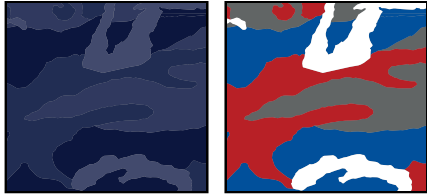
DIGITAL CAMO



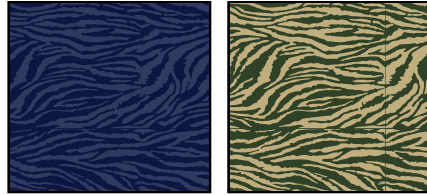
PIXEL CAMO



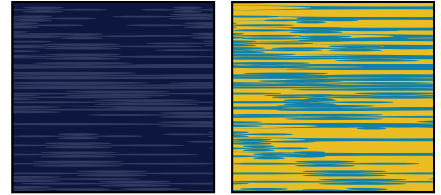
WINGS



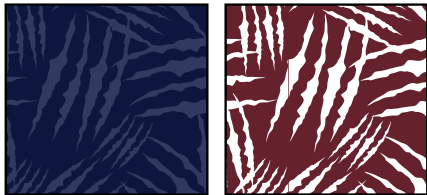
WOODLAND CAMO



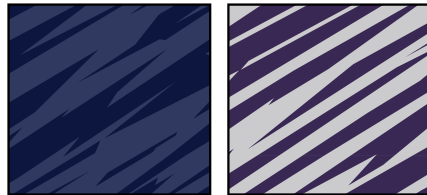
BENGAL



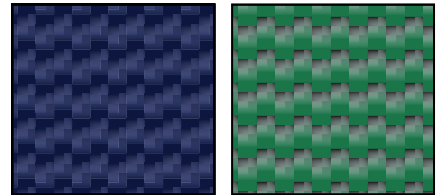
BLUR



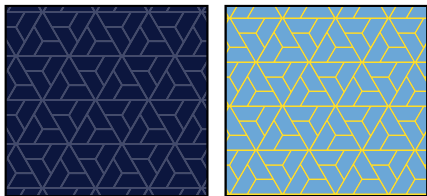
CLAW



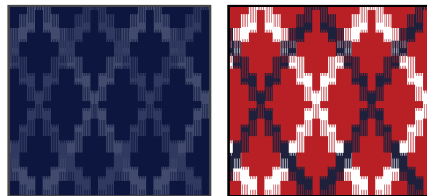
SPLINTER



CARBON WEAVE



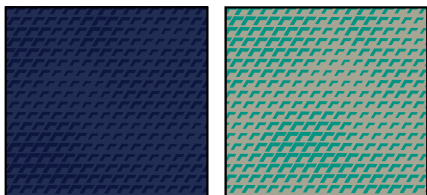
RAZOR



TOTEM

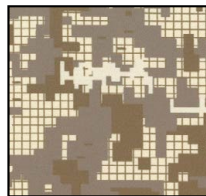


TREAD

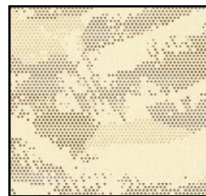


SCALE

DESERT CAMO
LOCKED COLOR COMBINATIONS,
CANNOT BE ALTERED



DESERT
DIGITAL CAMO



DESERT
PIXEL CAMO



DESERT
WOODLAND CAMO

FONT OPTIONS

BADGER

ABCDEFGHIJKLMNOPQRSTUVWXYZ
0123456789

COMBINE

ABCDEFGHIJKLMNOPQRSTUVWXYZ
0123456789

BEARCAT

ABCDEFGHIJKLMNOPQRSTUVWXYZ
0123456789

CADET

ABCDEFGHIJKLMNOPQRSTUVWXYZ
0123456789

HIGHLIGHT

ABCDEFGHIJKLMNOPQRSTUVWXYZ
0123456789

TERRAFONT

ABCDEFGHIJKLMNOPQRSTUVWXYZ
0123456789

PREMIER

ABCDEFGHIJKLMNOPQRSTUVWXYZ
0123456789

TIFFANY

ABCDEFGHIJKLMNOPQRSTUVWXYZ
0123456789

FULL BLOCK

ABCDEFGHIJKLMNOPQRSTUVWXYZ
0123456789

UNDENIABLE

ABCDEFGHIJKLMNOPQRSTUVWXYZ
0123456789

FALCON

ABCDEFGHIJKLMNOPQRSTUVWXYZ
0123456789

PLAIN BLOCK

ABCDEFGHIJKLMNOPQRSTUVWXYZ

ATHLETIC SCRIPT

ABCDEFGHIJKLMNOPQRSTUVWXYZ
abcdefghijklmnopqrstuvwxyz

CLASSIC SCRIPT

ABCDEFGHIJKLMNOPQRSTUVWXYZ
abcdefghijklmnopqrstuvwxyz

NOTE:

- Gameday Select Package Pricing now includes all of the above listed fonts
- Dropped fonts available for fill-in orders only

STOCK DECORATION OPTIONS

SCREEN PRINT	ONE COLOR	TWO COLORS
Team Name	\$5.00	\$10.00
Team Mascot/Logo	\$5.00	\$10.00
Front + Back Numbers	\$10.00	\$15.00

TWILL	ONE COLOR	TWO COLORS
Team Name	\$20.00	\$25.00
Front + Back Numbers	\$25.00	\$30.00
Player Names	\$20.00	
ArmourFuse Twill Patch (Max 3"x 3")	\$10.00	\$10.00

EMBROIDERY	ONE COLOR	TWO COLORS
Team Name (up to 2")	\$10.00	\$10.00

see page 19 for Embroidered Mascot/Logo pricing

ADDITIONAL STOCK OPTIONS & NOTES

- Player Numbers Per Location = 1/2 of above
- "Front + Back Numbers" pricing
- Player Name Directly On Jersey Only (No Nameplates)
- ArmourFuse Twill = Twill Pricing +\$10
- Add Tail to Script Font Twill Team Name +\$10
- Add Embroidery to Twill Tail +\$10
- Non-Stock designs and lettering may require additional charge at Under Armour's discretion (call for quote)

LETTERING ARRANGEMENTS

STRAIGHT

ARCHED

BRIDGED

VERTICAL ARCH

Athletic Script

Classic Script

ADDITIONAL LENGTH OPTIONS (ARMOURFUSE ONLY - FREE OF CHARGE)

BASEBALL/SOFTBALL

TYPE	ADJUSTMENT	CODE
JERSEYS	Add 2" body length	UJX2BDY
	Add 4" body length	UJX4BDY

FOOTBALL

TYPE	ADJUSTMENT	CODE
JERSEYS	Shorten to waist length	
PANTS	Add 2" to inseam length	UJX2INS

LACROSSE/ FIELD HOCKEY

TYPE	ADJUSTMENT	CODE
JERSEYS	Add 2" body length	UJX2BDY
SHORTS	Subtract 1" from inseam	UJSHTN1
	Subtract 2" from inseam	UJSHTN2
	Add 1" to inseam length	UJXIINS
	Add 2" to inseam length	UJX2INS
KILTS	Add 1" to inseam length	UJXIINS
	Add 2" to inseam length	UJX2INS

BASKETBALL

TYPE	ADJUSTMENT	CODE
JERSEYS	Add 2" body length	UJX2BDY
	Add 4" body length	UJX4BDY
	Add 6" body length	UJX6BDY
SHORTS	Subtract 1" from inseam	UJSHTN1
	Add 1" to inseam length	UJXIINS
	Add 2" to inseam length	UJX2INS
	Add 3" to inseam length	UJX3INS
SHOOTING SHIRTS	Add 2" body, 1" sleeve	UJX2B1S
	Add 4" body, 2" sleeve	UJX4B2S
	Add 6" body, 3" sleeve	UJX6B3S

SOCCER

TYPE	ADJUSTMENT	CODE
JERSEYS	Add 2" body length	UJX2BDY
SHORTS	Subtract 1" from inseam	UJSHTN1
	Subtract 2" from inseam	UJSHTN2
	Add 1" to inseam length	UJXIINS
	Add 2" to inseam length	UJX2INS

TRACK & FIELD

TYPE	ADJUSTMENT	CODE
JERSEYS	Add 2" body length	UJX2BDY
LOOSE SHORTS*	Subtract 1" from inseam	UJSHTN1
	Add 1" to inseam length	UJXIINS

*UJTS2M & UJTS2W ONLY

TRAINING

TYPE	ADJUSTMENT	CODE
JERSEYS	Add 2" body length	UJX2BDY
	Add 4" body length	UJX4BDY
	Add 6" body length	UJX6BDY
SHORTS	Subtract 1" from inseam	UJSHTN1
	Subtract 2" from inseam	UJSHTN2
	Add 1" to inseam length	UJXIINS
	Add 2" to inseam length	UJX2INS
	Add 3" to inseam length	UJX3INS

VOLLEYBALL

TYPE	ADJUSTMENT	CODE
JERSEYS	Add 2" body length	UJX2BDY
SHORTS	Subtract 1" from inseam	UJSHTN1
	Subtract 2" from inseam	UJSHTN2

EMBROIDERY

MASCOTS (STOCK ONLY) LIST PRICE

Mascot	\$11.00
Mascot with One Line	\$12.00
Mascot with Two Lines	\$13.00
American Flag	\$11.00
Small/Homeplate	\$6.00

- Prices are based upon size of designs, not the number of colors. Prices are subject to change if design exceeds specifications.
- Dimensions are maximum space - unless specifically noted best judgement will be used.
- Letter styles are available horizontal or arched.
- No digitizing charge for team names.

- Flag size up to 2" by 3" (bigger area - call for quote)
- Minimum order charges apply for embroidery
- All designs require an additional digitizing charge, except:
 - 1) Digitized designs supplied on a disk
 - 2) Digitized design is a re-order of an existing design

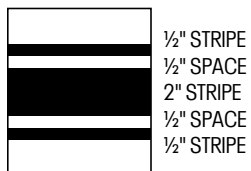
DIGITIZING (STOCK AND ARMOURFUSE ONLY) LIST PRICE

Stock Designs and Lettering	\$180.00
Custom Logos	Call for Quote

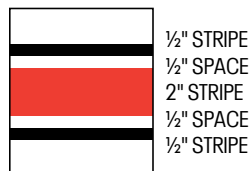
STANDARD SLEEVE PRINT STRIPES

*OPTIONS - Code numbers listed below stripe patterns

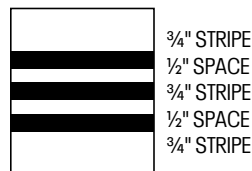
*Stripes may be adjusted to fit smaller garments and not measure exactly as shown.



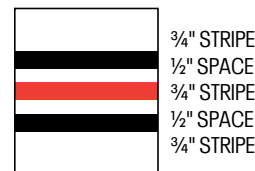
01



02



03



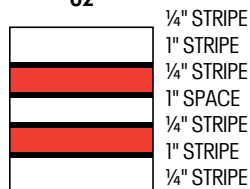
04



05



06



07



08



09

ARMOURFUSE® GRAPHIC OPTIONS



TEAM TRAINING



STYLE NAME	GENDER	STYLE#	UA ECLIPSE	UA VITAL	SCOUT
HOODY	MEN'S	UJGSLHM	X	X	X
	WOMEN'S	UJGSLHW	X	X	X
	YOUTH	UJGSLHY	X	X	X
1/4 ZIP	MEN'S	UJGQZPM	X	X	X
	WOMEN'S	UJGHZPW	X	X	X
LOOSE SHORTSLEEVE	MEN'S	UJGJSIM	X	X	X
	WOMEN'S	UJGJSTW	X	X	X
	YOUTH	UJGJSTY	X	X	X
LOOSE LONGSLEEVE	MEN'S	UJGJLIM	X	X	X
	WOMEN'S	UJGJLIW	X	X	X
	YOUTH	UJGJLIY	X	X	X
COMPRESSION SLEEVELESS	MEN'S	UJGCBL	X	X	X
COMPRESSION SHORTSLEEVE	MEN'S	UJGTBL	X	X	X
COMPRESSION 1/2 SLEEVE	MEN'S	UJGHBL	X	X	X
COMPRESSION LONGSLEEVE	MEN'S	UJGCLS	X	X	X
POCKETED SHORT	MEN'S	UJGS2PM	X	X	X
	WOMEN'S	UJGS2PW	X	X	X
	YOUTH	UJGS2PY	X	X	X
NON-POCKETED SHORT	MEN'S	UJGS2M	X	X	X
	WOMEN'S	UJGS2W	X	X	X
	YOUTH	UJGS2Y	X	X	X

UNIFORM CARE INSTRUCTIONS

To enhance the appearance and extend the life of your uniforms, Under Armour recommends that you follow these cleaning and storing procedures:

DO NOT DRY CLEAN

DO NOT WASH IN HOT WATER

DO NOT USE CHLORINE BLEACH

DO NOT USE FABRIC SOFTENER

DO NOT WASH WHITES AND COLORS TOGETHER

DO NOT OVERLOAD THE WASHING MACHINE

DO NOT MACHINE DRY ON HIGH HEAT

DO NOT LEAVE WET OR DAMP GARMENTS IN YOUR TRAVEL BAG, IN A PILE WITH OTHER CLOTHING OR IN WASHING MACHINE

- Pre wash uniform prior to use.
- Uniforms should always be laundered immediately after wearing. However, if this is not possible, rinse garments and hang individually on rust-proof hangers. (Moisture may cause color migration of acid dyes so we advise separating wet or damp uniforms.)
- Belts and any other contrasting color items should be washed separately from the garment.
- It is always advisable to test wash a single uniform according to directions before washing an entire load.
- Wash and rinse all garments in warm water (approx. 110°) with mild detergent. Remove promptly after wash cycle.
- For optimum results, hang garments (especially those with elastane) to dry. If you cannot hang dry, machine dry on the lowest setting. Turn jerseys inside out before machine drying. Remove items from dryer immediately upon completion of the cycle. (Excessive heat can cause fabric shrinkage, discoloration, and cracking and peeling of vinyl plastisol lettering inks.)
- Make sure uniforms are completely dry before storing. Store in a dry area to prevent mildew. Protect them from sunlight and fluorescent light to prevent yellowing.

PLEASE NOTE: Under Armour will not be responsible for uniforms that are damaged due to improper care and maintenance. Failure to follow our specified care instructions will void all guarantees.

UNIFORM FILL-IN LIFECYCLE

LAST SHOWN IN CATALOG	LAST FILL-IN SEASON	LAST FILL-IN SHIP
SP'16	SP'19	6/15/2019
FA'16	FA'19	12/15/2019
WI'16	WI'19	3/15/2020
SP'17	SP'20	6/15/2020
FA'17	FA'20	12/15/2020
WI'17	WI'20	3/15/2021
SP'18	SP'21	6/15/2021
FA'18	FA'21	12/15/2021
WI'18	WI'21	3/15/2022
SP'19	SP'22	6/15/2022
FA'19	FA'22	12/15/2022
WI'19	WI'22	3/15/2023
SP'20	SP'23	6/15/2023
FA'20	FA'23	12/15/2023
WI'20	WI'23	3/15/2024
SP'21	SP'24	6/15/2024
FA'21	FA'24	12/15/2024
WI'21	WI'24	3/15/2025

GS GAMEDAY SELECT TEAM UNIFORMS
ORDERING INFORMATION AND CUSTOMER SERVICE:
1-800-474-6118
www.uacustomuniforms.com

AF ARMOURFUSE™ TEAM UNIFORMS
ORDERING INFORMATION AND CUSTOMER SERVICE:
1-800-594-9082
www.underarmourteamuniforms.com

NX UA NEXT
ORDERING INFORMATION AND CUSTOMER SERVICE:
1-800-594-9082
www.underarmourteamuniforms.com

S STOCK TEAM UNIFORMS
ORDERING INFORMATION AND CUSTOMER SERVICE:
1-800-594-9082
www.underarmourteamuniforms.com

ORDERING INFORMATION

Guarantee:

The materials and workmanship of our garments are guaranteed when given fair treatment and used under normal conditions.

Color Matching:

Scientifically, it is not possible to achieve a perfect color match from one dye lot to another. Therefore, we cannot guarantee a perfect match from order to order or from one fabric to another.

Color Abbreviation Key:

The following abbreviations may be used when ordering merchandise.

BG Baseball Gray	EB Electric Blue	PI Pink	SI Silver Grey
BK Black	GP Graphite	PK Powderkeg Blue	TA Taxi
BR Brown	KE Team Kelly Green	PO Poison	TE Teal
CA Cardinal	LG Steeltown Gold	PU Purple	TO Texas Orange
CB Carolina Blue	MA Maroon	RO Royal	TP Tropic Pink
CP Capri	NA Midnight Navy	RU Gold Rush	VG Team Vegas Gold
DG Forest Green	OR Dark Orange	SC University Red	WH White

Price Policy:

All catalog prices are list or suggested retail. Prices are subject to change without notice. Merchandise will be invoiced based on the prices in effect at the time the order is placed.

Terms:

Prices are FOB shipping point. Payment is due Net 30.

Minimum Order Charges:

A handling charge of \$10.00 will be added to orders of less than \$150.00 list. Custom and GamedaySelect fill-in minimum order is 6 units per style and color. A 100% surcharge will be applied to orders of 1-2 units, and a 50% surcharge for orders of 3-5 units.

Lettered Orders for COD Shipment:

A 50% deposit is required on all lettered orders calling for COD shipment.

Delivery:

Shipments will always be made by the fastest, least expensive means possible. The customer will assume any additional expense required to expedite delivery.

Order Cancellations:

Cancellations must be received at least one day prior to the ship date. Special order garments cannot be cancelled after they have been cut. Lettered garments cannot be cancelled after they have been printed or sewn.

Returns:

Claims must be reported to our office within 10 working days of merchandise receipt. Returns cannot be made after 30 days of the invoice date. All returns for plain merchandise must be clearly marked with an authorization number or label obtained from our office. All returns for lettered merchandise must be clearly marked "LETTERING." When requesting an authorization label, the following information is required: Reason for return, Invoice #, Style #, Color, Size/Quantity. An authorization label will then be sent to you to prepare the merchandise for return shipment. We reserve the right to repair, replace or issue credit for any merchandise returned. A 15% restocking fee and shipping charges will be charged for merchandise returned that is either not damaged or the damage is determined not to be our fault. All worn garments must be properly laundered prior to return or they will not be accepted.

All custom and custom-stock uniforms may not be returned under any circumstances if delivered properly.

Shortages:

All claims must be made within 10 days of the invoice date.

New Accounts:

All new accounts must be opened through your local sales representative. New accounts that do not have a Dunn and Bradstreet rating will be shipped COD until a credit line has been established.

Samples:

Samples will be entered and billed as a regular order. Samples cannot be returned without prior approval from our office.

Imprint Orders:

All imprint orders must be emailed, mailed or faxed in with detailed instructions on UA order forms. Imprint orders will not be taken by phone. Once garments have been lettered, the order cannot be cancelled or returned.

Under Armour will not be responsible for any items not checked for order accuracy or sizing before being sent to a printer / screener. We will not be responsible for shrinkage, defects, or damages caused during the imprinting of our garments by sources other than our own lettering department. Screenprinting sublimated uniforms can cause color migration. We do not recommend screenprinting on sublimated garments.

Photography is the property of Under Armour and is not to be used without written authorization.

GEARLINES -

coldgear®

-0° BEST FOR WEATHER BETWEEN 0° AND 55°

55°

allseasongear®

BEST FOR WEATHER BETWEEN 55° AND 75°

75°

heatgear®

BEST FOR WEATHER BETWEEN 75° AND 100°+ 100°+

**KEEPS YOU WARM
WHEN IT'S COLD.**

**FOR BETWEEN
THE EXTREMES.**

**KEEPS YOU COOL
WHEN IT'S HOT.**

PERFORMANCE DNA -

Every Under Armour® product is doing something for you: it's making you better. Following are the core pieces of DNA that deliver on this promise. The building blocks of performance.

THREADBORNE

Dries faster to keep you comfortable.

STORM

Water repellant performance fabric.

STRATEGIC VENTILATION

Strategic venting built into garment at key points where the body dumps heat. Keeps the athlete cool in hot conditions.

4-WAY STRETCH

Lightweight fabrics with built-in 4-way stretch improve mobility and accelerate dry time.

MOISTURE TRANSPORT

Wicks moisture from the body, keeping the athlete dry.

ODOR CONTROL

Fabric treated with antimicrobial agents.

UPF

Ultraviolet protection shields your skin from the sun's harmful rays and inhibits premature aging.

360° REFLECTIVITY

The high visibility solution for training safely during low light conditions.

WIND RESISTANT

Blocks wind from penetrating to the body. Helps regulate core body temperature.

ARMOURGRIP™

Locks gear in place using a tactified compound that prevents slippage.

FLATLOCK SEAMING

Specialized seaming that feels smooth against the skin and prevents chafing.

COLOR CODE CHART -

COLOR	CODE	COLOR	CODE	COLOR	CODE
BLACK	BLK 001	FOREST GREEN	GRN 301	VEGAS GOLD	VGD 710
STEALTH GRAY	STY 008	TEAM KELLY GREEN	TKG 305	TEAM VEGAS GOLD	TVG 715
ANTHRACITE	ATH 016	CLASSIC GREEN	CGN 312	COASTAL TEAL	CTL 722
CHARCOAL	CHC 019	POISON	POI 327	HIGH-VIS YELLOW	HVY 731
TRUE GRAY HEATHER	TRG 025	KELLY GREEN	KGR 350	STEELTOWN GOLD	SGD 750
STEEL	STL 035	CELERY	CEL 367	SUNBLEACHED	SNB 771
CLOUD GRAY	CGY 038	HYPER GREEN	HVG 389	TAXI	TXI 790
GRAPHITE	GPH 040	ROYAL	RYL 400	GOLD RUSH	GDR 795
ALUMINUM	ALU 052	MIDNIGHT NAVY	MDN 410	ORANGE	ORG 800
SILVER	SLV 055	CAPRI	CPR 419	PINK CHROMA	PKC 806
BASEBALL GRAY	BBG 075	ELECTRIC BLUE	ELB 428	BRILLIANCE	BRL 819
RHINO GRAY	RHG 076	CAROLINA BLUE	CBL 475	BLAZE ORANGE	BLZ 825
CARBON HEATHER	CBH 090	PURPLE	PUR 500	FLAWLESS	FLW 834
METALLIC SILVER	MSV 099	RED	RED 600	PERFECTION	PFT 853
WHITE	WHT 100	MAROON	MAR 609	DARK ORANGE	DKO 860
CLEVELAND BROWN	BRN 200	CARDINAL	CRD 625	VIVID	VIV 863
OATMEAL HEATHER	OAH 250	CRIMSON	CRI 630	TEXAS ORANGE	TXO 875
DUNE	DUN 261	CERISE	CER 653	TOXIC	TOX 879
CAMEL	CML 263	TROPIC PINK	TPK 654	GAMMA GREEN	GAG 883
STONE	STN 279	NEO PULSE	NPU 678	ASSORTED	AST 967
SANDSTORM	SDS 280	TRUE PINK	TRP 685	POWDERKEG BLUE	PKB 992
DESERT SAND	DES 290				

SIZING AND FIT -

Under Armour® Performance has already compensated in the design of its apparel to be consistent with normal (XS-3XL) sizing. Please order the size you would wear in a non-performance T-shirt or pant. All sizes are in inches.

MEN'S	SM	MD	LG	XL	XXL	3XL
Chest	34-36	38-40	42-44	46-48	50-52	54-56
Waist	28-29	30-32	34-36	38-40	42-44	46-48

WOMEN'S	XS	SM	MD	LG	XL	XXL
	0-2	4-6	8-10	12-14	16	18
Bust	31-33	33 1/2-35 1/2	36-38	38 1/2-40 1/2	41-43	43+
Waist	23-25	25 1/2-27 1/2	28-30	30 1/2-32 1/2	33-35	35+
Hip	33-35	35 1/2-37 1/2	38-40	40 1/2-42 1/2	43-45	45+

BOYS	YXS	YSM	YMD	YLG	YXL
	6	7	8	10	12
	14	16	18	20	
Chest	24	25 1/2	26 1/2	27 1/2	28 1/2
Waist	23	23 1/2	24 1/2	25 1/2	26 1/2
Hip	25	26 1/2	27 3/4	29	30 1/2

GIRLS	YXS	YSM	YMD	YLG	YXL
	6	6X	7	8	10
	12	14	16	18	20
Chest	24	24 3/4	26	27	28 1/2
Waist	23	23 1/2	23 1/2	24 1/4	25
Hip	25	25 3/4	27 1/2	28 1/2	30



ULTRA-TIGHT, 'SECOND-SKIN' FIT

These products fit snugly to the body providing a close, lean, and supportive fit.



GENEROUS CUT, OVERSIZED FIT

Generous cut product, providing full range of motion, and a full, loose fit.



CONTOURED TO THE BODY

Designed to be very close to the body without the constriction of compression.

CONTACT CENTER

Corporate Headquarters
1020 Hull Street
Baltimore, MD 21230

Under Armour® Apparel Returns
1010 Swan Creek Drive
Baltimore, MD 21226

UA Footwear/Accessories Returns
2510 W. Walnut Avenue
Rialto, CA 92376

ALL TEAM SPORTS ORDERS AND QUESTIONS PLEASE USE THE FOLLOWING:

1.888.828.1547

CORPORATE OFFICE HOURS OF OPERATION

Monday through Friday, 8:30am – 7:00pm, EST.

UNDER ARMOUR® B2B - ONLINE ORDERING

armourhouse.underarmour.com

- 24/7 access to check inventory and place orders
- Ability to track orders and shipments
- Priority product allocation
- Faster processing time

UNDER ARMOUR® B2B - SUPPORT

B2B_support@underarmour.com

UNDER ARMOUR® RETURN POLICY

Under Armour® stands behind its gear and EXPECTS nothing less than perfection. If you have received a defective product, an incorrect size, or an incorrect order, please contact us immediately for a return authorization number so that we can quickly process your return and ensure your satisfaction.

ALL RETURNS MUST BE COMPLETED WITHIN 30 DAYS OF RECEIPT AND MUST BE IN REASONABLE CONDITION. ALL RETURNS MUST HAVE THE RA# CLEARLY MARKED ON THE CARTON. ALL RETURNS ARE SUBJECT TO A 15% RE-STOCKING FEE.

Should you need to return or exchange an item, you MUST include your RA#, a copy of your invoice, and an explanation in writing as to why you are returning the item. Send your return to the marked address on your pack list. If you are exchanging merchandise, you are responsible for the cost of returning the product. Original shipping costs are non-refundable. All returned merchandise must be received in new, resalable condition.

UNDER ARMOUR® CANCELLATION POLICY

Any request for cancellation of an order for UA products must be made, in writing, through the customer's UA Sales Representative. A request to cancel an order must be made more than 30 days before the customer's original desired ship date. All cancellations are subject to UA approval.

ALL PRICES SET FORTH HEREIN ARE SUBJECT TO CHANGE WITHOUT NOTICE.

© 2020 Under Armour®. All rights reserved. All trademarks, images, photographs, logos, and graphics are owned or controlled by Under Armour®.

Confidential and business proprietary information for internal Under Armour®, Inc. use only. Reproduction is strictly prohibited.

WEST

PAT BAUER
SR. REGIONAL MANAGER
410.299.3798
pbauer@underarmour.com
WA // OR // MT // ID // AK

JEFF UTTZ
626.484.3496
jeffu@underarmour.com
Southern & Central CA //
Southern NV // HI

MARC GUSTAFSON
303.828.7468
mgustafson@underarmour.com
UT // CO // WY //
Western KS // Western NE

MATT VALENTINE
415.307.1290
mvalentine@underarmour.com
Northern CA // NV

DAN LAABES
602.882.7241
dlaabes@underarmour.com
AZ // NM // West TX

GREG ROMINE
719.238.9244
gromine@underarmour.com
North TX (Dallas) // OK // Western AR

MICHAEL SMITH
713.471.5378
michael.smith@underarmour.com
South TX

CENTRAL

BROCK PAALHAR
SR. REGIONAL MANAGER
573.808.1010
bpaalhar@underarmour.com
IA // MN // ND // SD

TONY DONOFRIO
419.356.9742
tonyd@underarmour.com
Northern IN // Northern OH // MI

FRANK WEBER
618.540.3955
fweber@underarmour.com
MO // Central & Eastern NE //
Southern IL // Eastern KS

JOHN WACHTEL
513.314.4024
jwachtel@underarmour.com
Southern IN // Southern OH // KY
Eastern TN // WV

MARC CALABRETTA
443.655.6768
mcalabretta@underarmour.com
Northern IL // IA // WI

MONTE GIBBS
662.801.3039
mgibbs@underarmour.com
Central & Western TN // Panhandle FL //
LA // AL // MS // Eastern AR

EAST

MIKE LOMAS
SR. REGIONAL MANAGER
610.999.2304
mlomas@underarmour.com
PA

DAN WILLIAMS
352.672.1676
dwilliams@underarmour.com
FL (except Panhandle)

ALEX BRUEGGEMANN
410.652.4337
abrueggemann@underarmour.com
GA // SC // NC

GARY POWERS
410.746.3790
gpowers@underarmour.com
MD // VA // Washington DC

FRANK NUNAN
484.576.9777
fnunan@underarmour.com
DE // NJ // Philadelphia area

BOB BARTLETT
315.380.6505
bobb@underarmour.com
NY // Lax Specialty

JAY KELLEHER
443.615.0462
jkelleher@underarmour.com
New England

COLLEGIATE

TOMMY AMICO
951.808.0367
tamico@underarmour.com
WEST

TODD LOCKLEAR
410.454.6572
tlocklear@underarmour.com
EAST

LICENSEES

FOUNDER SPORT GROUP
Stock & Armourfuse Uniforms
www.underarmourteamuniforms.com
800.594.9082
UAstatus@foundersportgroup.com



TEL: 1.888.828.1547 / B2B: ARMOURHOUSE.UNDERARMOUR.COM

COLLEGIATE

TEAMSPOrts COLLEGIATE / TEAMSPOrts.COLLEGIATE@UNDERARMOUR.COM

CENTRAL

TEAM SPORTS MW / TEAMSPOrtsSMW@UNDERARMOUR.COM

EAST

TEAM SPORTS SE / TEAMSPOrtsSSE@UNDERARMOUR.COM
TEAM SPORTS NE / TEAMSPOrtsSNE@UNDERARMOUR.COM

WEST

TEAM SPORTS WC / TEAMSPOrtsSWC@UNDERARMOUR.COM
TEAM SPORTS SW / TEAMSPOrtsSSW@UNDERARMOUR.COM